

TurningPoint® Audience Response System

Examples of Question Types and Formats

IMPORTANT: PLEASE PLACE EACH INDIVIDUAL QUESTION AND SET OF POSSIBLE RESPONSES ON ITS OWN SLIDE WITHIN YOUR POWERPOINT PRESENTATION.

General Formatting Guidelines:

1. Make the text for all questions and response choices 18pt. or larger; 24 pt. size is ideal.
2. Type text in simple, readable sans serif fonts such as Helvetica or Arial
3. Use solid color backgrounds on question slides.

Example 1: Simple Multiple Choice Question

Recommendations:

- Limit your response choices to no more than 5 or 6 for each question
- Provide one correct answer choice – if you want responders to indicate that more than one choice is correct, then use the format “A and B above”, or “All of the above”, etc.

In the AFFIRM (Atrial Fibrillation Follow-up Investigation of Rhythm Management) study, the use of which of the following drugs was positively associated with survival?

- A. Amiodarone
- B. Digoxin
- C. Warfarin
- D. Diltiazem
- E. Sotalol

Example 2: Case-based with Images Multiple Choice Question

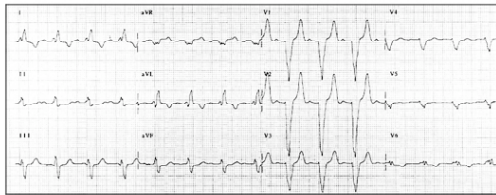
- If you wish to present case data or show any medical image(s) prior to asking for audience responses, it is best to break the question elements into multiple slides as shown below.

Your 80-year-old male patient is seen in the office for a follow-up visit in connection with his heart failure with an atherosclerotic etiology. He has had three prior MIs.

He has been on digoxin, spironolactone, and hydrochlorothiazide. Because of increasing orthopnea and fatigue, a month ago he was started on benazepril. His orthopnea has improved, but he continues to feel tired and has mild nausea.

His temperature is 98.4 degrees F, pulse is 85, respirations are 18, and BP is 128/60. His neck veins are flat at 30 degrees of elevation, chest is clear, and heart has an apical holosystolic murmur of grade 2 intensity.

An ECG is obtained.



Which of the following is most likely to confirm your diagnostic impression?

- A. Dipyridamole stress 201-thallium perfusion study
- B. Liver profile
- C. Dobutamine stress echocardiographic study
- D. Electrolyte profile
- E. Coronary arteriogram

Example 3: Simple True/False Question

Which of the following statements is/are true?

- A. Arterial stiffening with advancing age occurs to a similar extent in all persons.
- B. It is not possible to index arterial stiffening in the office setting.
- C. Large artery stiffening with advance age causes an increase in systolic and diastolic pressure.
- D. Age-associated increase in peripheral vascular resistance is the major cause of age-associated arterial stiffening.

Example 4: Simple Audience Opinion Poll Question

“The Best Treatment for Metabolic Syndrome Is a Weight Loss Medication”

- A. I agree
- B. I disagree
- C. I am not sure